

**BENCHMARKS:**

**BENCHMARK # 239** ELEV. 305.95'  
 REBAR AND CAP LOCATED AT THE ENTRANCE TO OAKLEIGH SHOPPING CENTER ACROSS FROM THE INTERSECTION OF DARLINGTON ROAD AND MARLBOROUGH ROAD, 73.3 FEET SOUTHEAST OF THE LIGHT POLE IN THE OAKLEIGH SHOPPING CENTER PARKING LOT, 34.3 FEET NORTH OF THE WATER VALVE AT THE INTERSECTION OF DARLINGTON ROAD AND MARLBOROUGH ROAD, AND 84.5 FEET WEST OF SANITARY MANHOLE 12825.

N 621553.56  
 E 1437049.84

**BENCHMARK # 238** ELEV. 298.28'  
 REBAR AND CAP LOCATED IN THE PARKING LOT OF OAKLEIGH SHOPPING CENTER, 102.9 FEET NORTHEAST OF SANITARY MANHOLE 12827, 102.4 FEET NORTHEAST OF STORM DRAIN MANHOLE AND 84.2 FEET NORTHWEST OF WATER VALVE ON THE NORTH SIDE OF DARLINGTON ROAD AT GLENCOE ROAD.

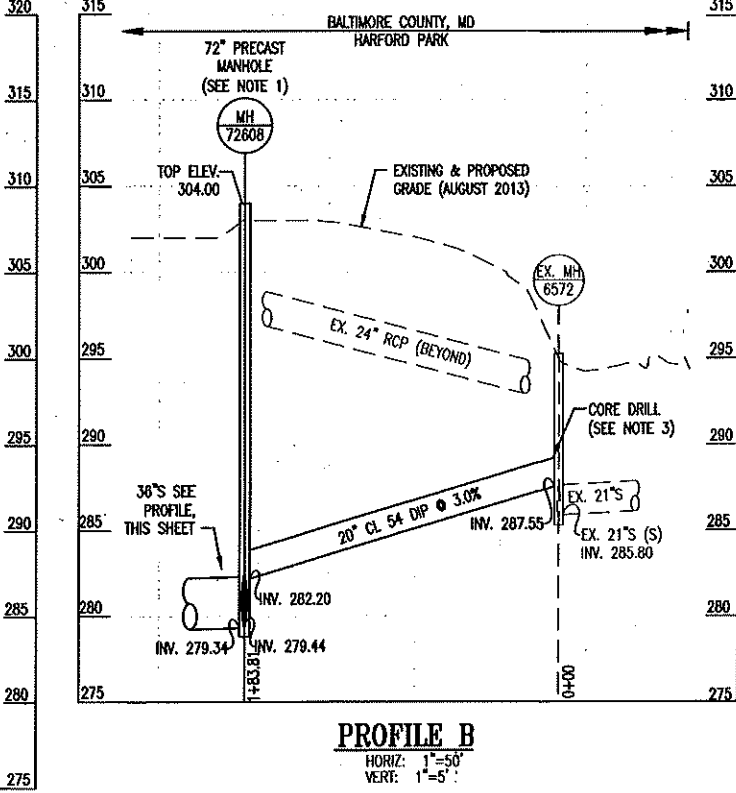
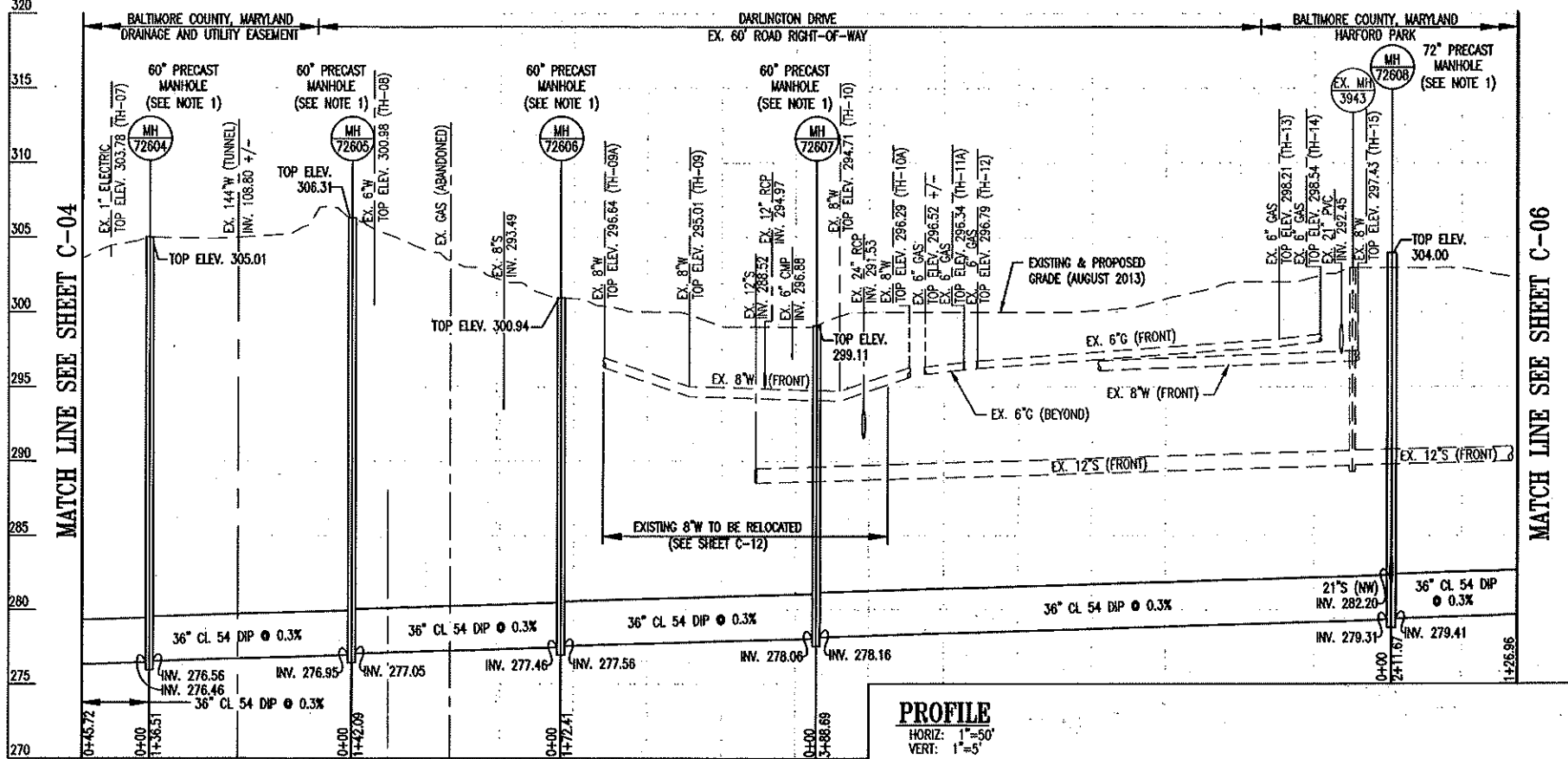
N 621761.69  
 E 1437329.73

**NOTES:**

- 60-INCH AND 72-INCH PRECAST CONCRETE MANHOLES SHALL BE IN ACCORDANCE WITH BALTIMORE COUNTY STANDARD DETAIL, PLATE S-5.
- AN INTERMEDIATE LANDING PLATFORM IS REQUIRED FOR ALL MANHOLES EXCEEDING TWENTY FEET (20') DEPTH MEASURED FROM RIM ELEVATION TO LOWEST PIPE INVERT. SEE DETAIL, SHEET C-14.
- CONTRACTOR SHALL CORE DRILL EXISTING MANHOLE 6572 FOR INSTALLATION OF NEW 20-INCH DIP SEWER. SEE GENERAL NOTE 24, SHEET G-02 AND THE TECHNICAL SPECIFICATIONS.
- LOCATION OF TEST HOLES AND SOIL BORINGS ARE SHOWN IN PLAN. FOR STAKEOUT AND TEST HOLE INFORMATION, SEE SHEET G-04. FOR TRAVERSE RECOVERY INFORMATION SEE SHEET G-05. FOR SOIL BORING LOGS SEE SHEETS C-19 THROUGH C-24.
- FOR EROSION AND SEDIMENT CONTROL AND SITE DATA, SEE SHEET ES-01 THROUGH ES-13.
- FOR LANDSCAPE AND FOREST CONSERVATION/PROTECTION PLANS, SEE SHEETS L-01 THROUGH L-08.
- FOR MAINTENANCE OF TRAFFIC PLAN, SEE SHEET TOP-01 THROUGH TOP-26.
- TRENCH SHALL BE IN ACCORDANCE WITH BALTIMORE COUNTY STANDARD DETAILS, PLATES G-6 AND G-7. TRENCH REPAIR SHALL BE IN ACCORDANCE WITH BALTIMORE COUNTY STANDARD DETAIL, PLATE R-38.
- CONTRACTOR SHALL COORDINATE TEMPORARY BRACING AND/OR RELOCATION OF BGE POLES, OVERHEAD ELECTRIC AND TELEPHONE WITH THE COUNTY, BGE, AND VERIZON.
- CONTRACTOR SHALL PROVIDE FULL WIDTH MILL AND OVERLAY FOR DARLINGTON DRIVE WITHIN THE LIMITS SHOWN IN PLAN OR AS DIRECTED BY THE ENGINEER.

BILL OF MATERIALS	
QUANTITY	ITEM/DESCRIPTION
190 L.F.	8" CL 54 RESTRAINED JOINT DIP WATER
178 L.F.	20" CL 54 DIP SEWER
944 L.F.	36" CL 54 DIP SEWER
25 V.F.	72" PRECAST MANHOLE
102 V.F.	60" PRECAST MANHOLE

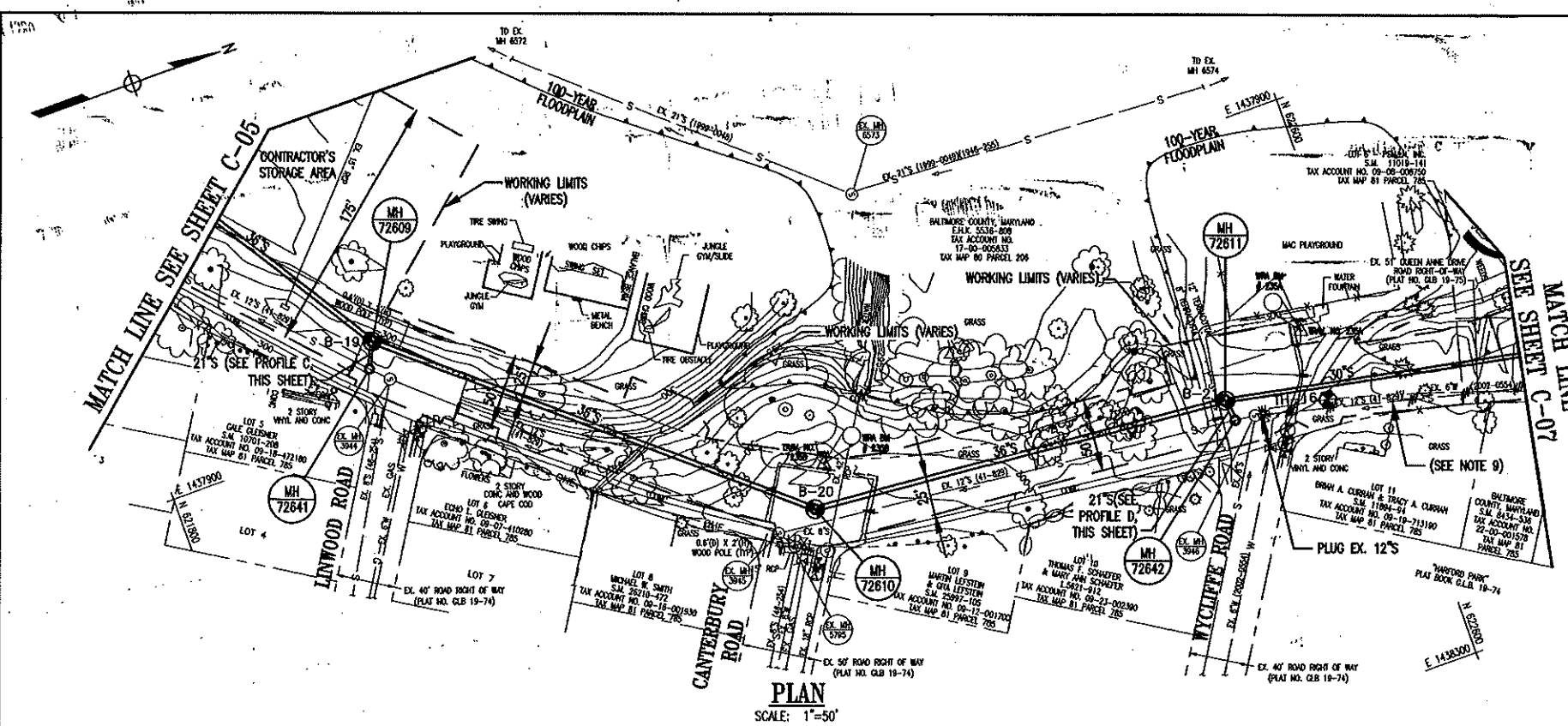
NUMBER OF HOUSE CONNECTIONS = 0



**PROFILE B**  
 HORIZ: 1"=50'  
 VERT: 1"=5'

	PROFESSIONAL CERTIFICATION		AS-BUILT / REVISION	BY	DATE	P.W.A. NO.	KEY SHEET	POSITION SET	DRAWING SCALE	DEPARTMENT OF PUBLIC WORKS	
	I HEREBY CERTIFY THAT THESE DOCUMENTS WERE PREPARED OR APPROVED BY ME, AND THAT I AM A DULY LICENSED PROFESSIONAL ENGINEER UNDER THE LAWS OF THE STATE OF MARYLAND.										
	LICENSE NO. 19639 REGISTRATION DATE 09/30/2014										
	ENGINEER: ROBERT HAMILTON, P.E.		DOB BY: RAN	BUREAU OF ENGINEERING AND CONSTRUCTION	BUILDINGS	HIGHWAYS	STRUCTURES	STORM DRAINS	SEWER	WATER	FIELD ENGINEER
DATE: MAY 10, 2016		OWN BY: RAN/AM	REVIEWED BY:								
		CHD BY: JHM	DATE REVIEWED:								

BALTIMORE COUNTY DEPARTMENT OF PUBLIC WORKS BUREAU OF ENGINEERING & CONSTRUCTION EAST BRANCH HERRING RUN RELIEF SEWER PLAN AND PROFILE		SHEET DESIGNATION C-05	CONTRACT NUMBER 14117 SXO
SUBDIVISION: PARKVILLE BALTIMORE COUNTY ELECTION DIST. NO.: 9C5		JOB ORDER NUMBER 201-0077-7103	SHEET 10 OF 76 DRAWING NUMBER 2014-1551 FILE NO. 1

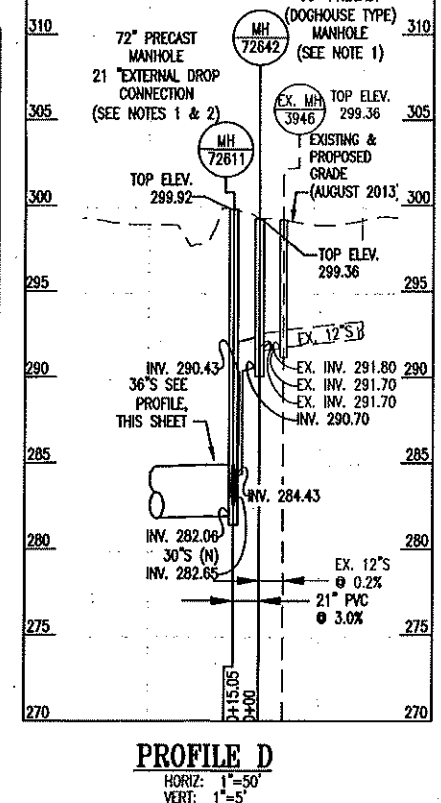
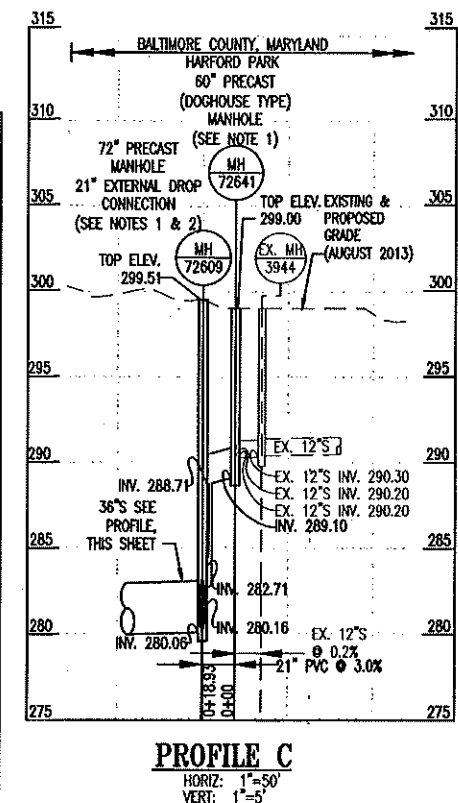
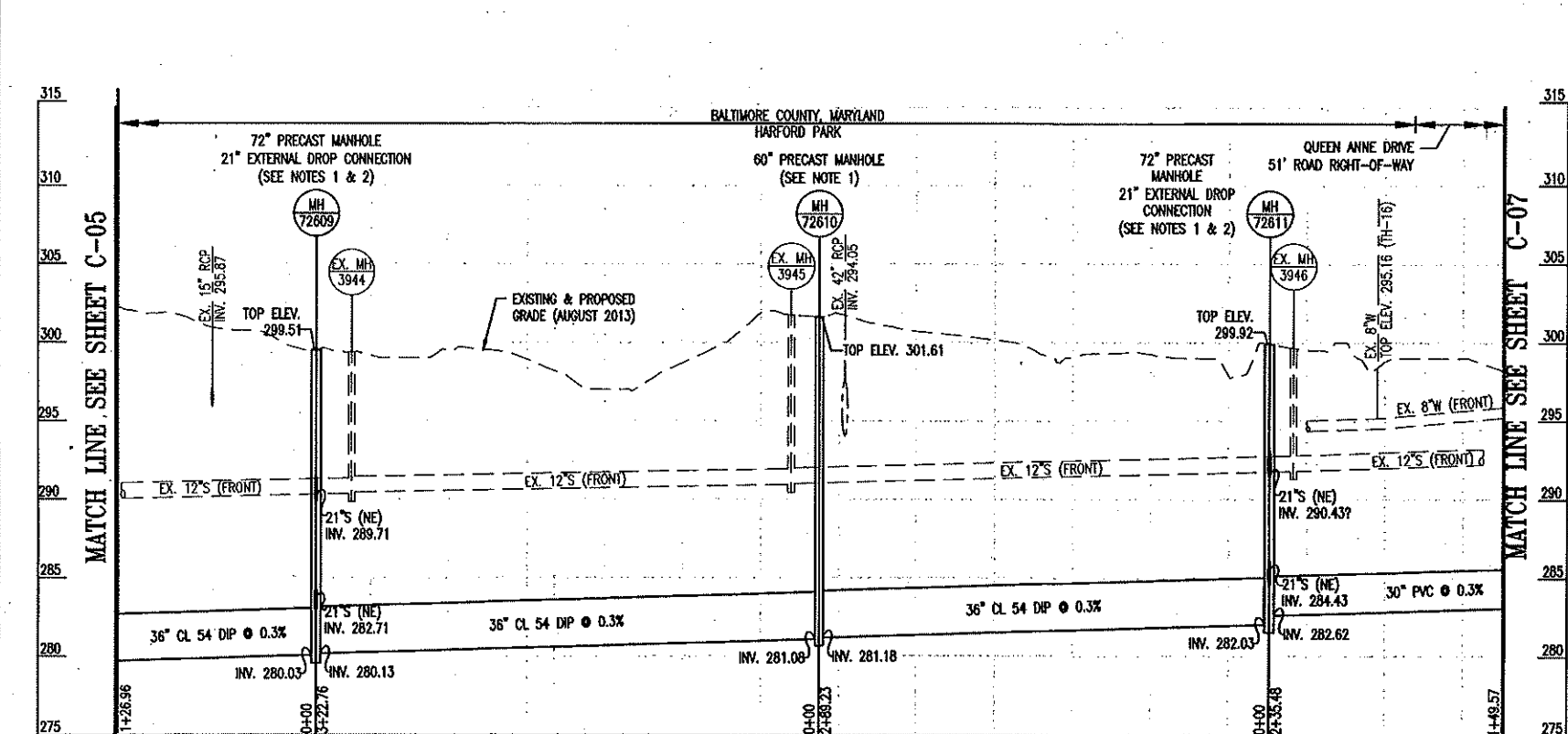


**BENCHMARKS:**

- WRA TRAVERSE # 235B** ELEV. 302.08'  
 REBAR AND CAP LOCATED IN HARFORD PARK AT CANTERBURY ROAD, 59.6 FEET NORTHEAST OF SANITARY MANHOLE 3945, 60.0 FEET NORTH OF SANITARY MANHOLE 5795, AND 59.0 FEET NORTHWEST OF THE STORM DRAIN MANHOLE AT THE END OF CANTERBURY ROAD.  
 N 622225.82  
 E 1438028.23
- WRA TRAVERSE # 235A** ELEV. 301.03'  
 REBAR AND CAP LOCATED IN HARFORD PARK AT WYCLIFFE ROAD, 65.6 FEET NORTHWEST OF SANITARY MANHOLE 3946, 83.5 FEET WEST OF THE CORNER OF THE HOUSE (BRIAN A. CURRAN & TRACY A. CURRAN).  
 N 622562.13  
 E 1438053.34

**NOTES:**

- 60-INCH AND 72-INCH PRECAST CONCRETE MANHOLES SHALL BE IN ACCORDANCE WITH BALTIMORE COUNTY STANDARD DETAIL, PLATE S-5. DOGHOUSE TYPE MANHOLES SHALL BE IN ACCORDANCE WITH BALTIMORE COUNTY STANDARD DETAIL, PLAT S-15 AND SECTION SP-02605 OF THE TECHNICAL SPECIFICATIONS.
- 21-INCH EXTERNAL DROP CONNECTIONS SHALL BE IN ACCORDANCE WITH DETAIL, SHEET C-14
- AN INTERMEDIATE LANDING PLATFORM IS REQUIRED FOR ALL MANHOLES EXCEEDING TWENTY FEET (20') DEPTH MEASURED FROM RIM ELEVATION TO LOWEST PIPE INVERT. SEE DETAIL, SHEET C-14.
- LOCATION OF TEST HOLES AND SOIL BORINGS ARE SHOWN IN PLAN. FOR STAKEOUT AND TEST HOLE INFORMATION, SEE SHEET G-04. FOR TRAVERSE RECOVERY INFORMATION SEE SHEET G-05. FOR SOIL BORING LOGS SEE SHEETS C-19 THROUGH C-24.
- FOR EROSION AND SEDIMENT CONTROL AND SITE DATA, SEE SHEETS ES-01 THROUGH ES-13.
- FOR LANDSCAPE AND FOREST CONSERVATION/PROTECTION PLANS, SEE SHEETS L-01 THROUGH L-08.
- FOR MAINTENANCE OF TRAFFIC PLAN, SEE SHEETS TOP-01 THROUGH TOP-26.
- TRENCH SHALL BE IN ACCORDANCE WITH BALTIMORE COUNTY STANDARD DETAILS, PLATES G-6 AND G-7. TRENCH REPAIR SHALL BE IN ACCORDANCE WITH BALTIMORE COUNTY STANDARD DETAIL, PLATE R-38.
- PIPES TO BE ABANDONED SHALL BE PLUGGED BOTH UPSTREAM AND DOWNSTREAM AND ABANDONED IN PLACE UNLESS OTHERWISE NOTED. ABANDONED PORTIONS BETWEEN PLUGS MAY BE REMOVED BY THE CONTRACTOR IF NECESSARY FOR CONSTRUCTION OF PROPOSED SEWER. PIPE AND MANHOLE ABANDONMENT SHALL BE IN ACCORDANCE WITH DETAILS, SEE SHEET C-14.



BILL OF MATERIALS	
QUANTITY	ITEM/DESCRIPTION
725 L.F.	36" CL 54 DIP SEWER
82 L.F.	30" PVC SEWER
24 L.F.	21" PVC SEWER
37 V.F.	72" PRECAST MANHOLE
19 V.F.	60" PRECAST DOGHOUSE TYPE MANHOLE
21 V.F.	60" PRECAST MANHOLE
2 E.A.	21" EXTERNAL DROP CONNECTION

NUMBER OF HOUSE CONNECTIONS = 0

	<b>PROFESSIONAL CERTIFICATION</b> I HEREBY CERTIFY THAT THESE DOCUMENTS WERE PREPARED OR APPROVED BY ME AND THAT I AM A DULY LICENSED PROFESSIONAL ENGINEER UNDER THE LAWS OF THE STATE OF MARYLAND. LICENSE NO. 18639 EXPIRATION DATE 03/24/2018	<b>AS-BUILT / REVISION</b> BY: [ ] DATE: [ ] P.W.A. NO. [ ] KEY SHEET POSITION SHOWN [ ] DRAWING SCALE: [ ] DEPARTMENT OF PUBLIC WORKS	<b>BALTIMORE COUNTY DEPARTMENT OF PUBLIC WORKS BUREAU OF ENGINEERING &amp; CONSTRUCTION</b> <b>EAST BRANCH HERRING RUN RELIEF SEWER</b> <b>PLAN AND PROFILE</b> SUBDIVISION: PARKVILLE BALTIMORE COUNTY ELECTION DIST. NO.: 9C5	<b>DESIGN AND DRAWINGS BASED ON MARYLAND COORDINATE SYSTEM (MCS) HORIZONTAL NAD 83/91 AND VERTICAL NAVD 88</b>	<b>SHEET DESIGNATION</b> C-06	<b>CONTRACT NUMBER</b> 14117 SXO
	<b>ENGINEER: ROBERT HAMILTON, P.E.</b> DON BY: [ ] REVIEWED BY: [ ] DATE REVIEWED: [ ] OWN BY: [ ] CDD BY: [ ]	<b>APPROVED BY:</b> [ ] <b>DATE:</b> [ ] <b>CHIEF:</b> [ ]			<b>JOB ORDER NUMBER</b> 201-0077-7103 <b>SHEET 11 OF 76</b> <b>DRAWING NUMBER</b> 2014-1552 <b>FILE NO. 1</b>	